



Feature

1. 1.8mm Round/Sing-turn/Cermet /Open Frame.
2. Cross slot adjustment options.
3. Horizontal and vertical mounting styles.

8mm Ceramet Trimmers

Electrical characteristics

- Total Resistance.....1K Ω ~1M Ω
- Total Resistance Tolerance..... $\pm 30\%$
- Resistance Taper.....B taper
- Max Operating Voltage.....AC 100V at 70 °C
- Rated Power.....0.5W
- Residual Resistance Value.....R $\leq 500\Omega$, Within 10 Ω ,
500 Ω < R $\leq 1M\Omega$ 2% total Resitance
- Contact Resistance.....5% or less

Mechanical characteristics

- Total Rotational Angle.....280° $\pm 15^\circ$
- Rotational Stopper Strength.....0.8Kgf.cm Min
- Rotational Torque.....50gf.cm~350gf.cm

Durability

- Rotational Life.....50 ± 2 cycles
- Temperature Range.....-55°C~+125°C
- Soldering Conditions.....260°C $\pm 5^\circ\text{C}$, 5Sec.
- Humidity.....40 $\pm 2^\circ\text{C}$, 95-95%RH, 500 ± 10 H, $\Delta\text{TR}\pm 5\%$
- Load Life.....70°C $\pm 3^\circ\text{C}$, 500 ± 10 hours, $\Delta\text{TR}\pm 5\%$
- Resistance to Heat.....300 $\pm 10^\circ\text{C}$, 3 ± 0.5 Sec, $\Delta\text{TR}\pm 2\%$
- Temperature Coefficient..... $\pm 250\text{ppm}/^\circ\text{C}$

HOW TO ORDER

GTM08-		H	1	P	1	B	100K	1
--------	--	---	---	---	---	---	------	---

Model Series

Code	Operating Direction
H	Top Adjust, PC Pin
V	Side Adjust, PC Pin

Terminal Type

See Note 2

Shaft Length

See Note 1

Rotor Type

See Note 1

Code	Resistance Taper
B	Linear (0B)

Total Resistance
1K
2K
5K
10K
20K
50K
100K
200K
500K
1MEG

Code	Operation Life
(Blank)	Std. Life w/o anti-sulfur
1	Std. Life w/ anti-sulfur

Note1: Rotor Type & Shaft Length:

P-Type

Technical drawing of P-Type coupling showing front and side views. Dimensions: 3.36, 1.04, 2.88, 0.8, Ø7.04.

Code	1
L	4.2

O-Type

Technical drawing of O-Type coupling showing front view.

Code	1
L	No Shaft

R-Type

Technical drawing of R-Type coupling showing front and side views. Dimensions: 0.64, L, M, Ø7.04, 1.2.

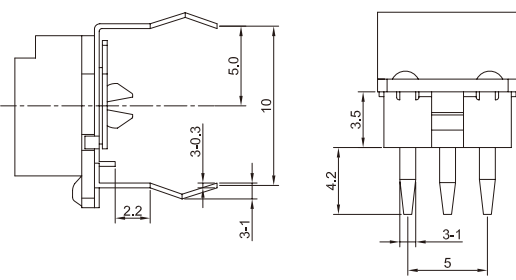
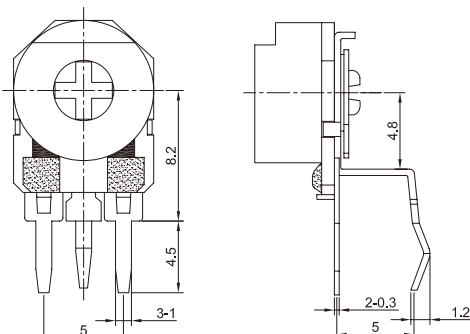
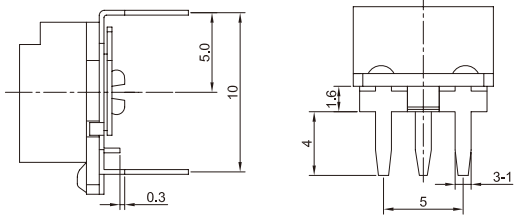
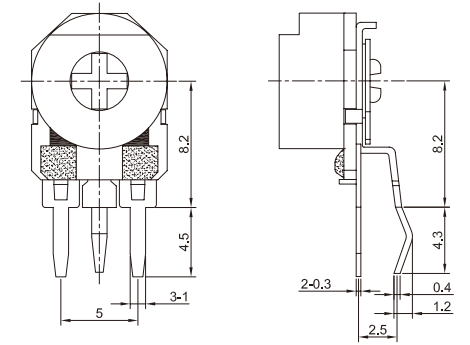
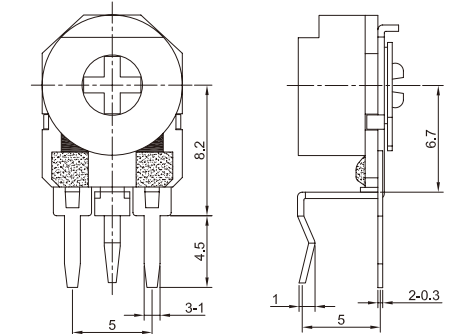
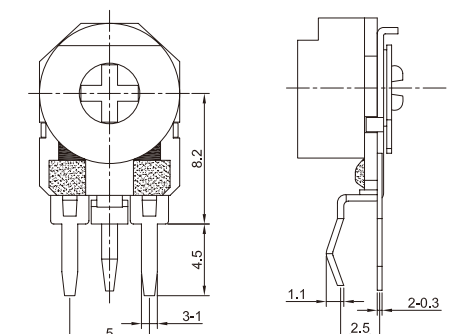
Code	1	2	3	4	5
L	6.7	12.7	5.7	9.7	15
M	5	5	6	6	6

Q-Type

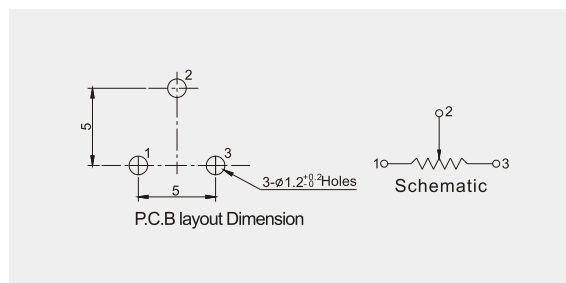
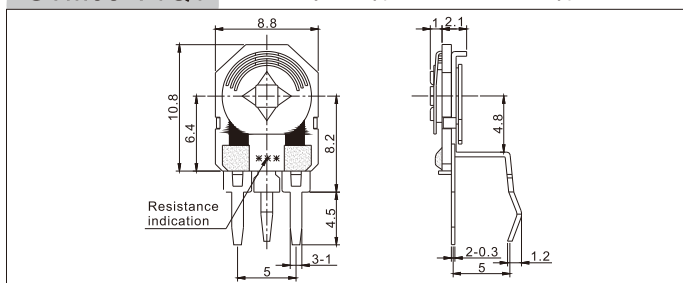
Technical drawing of Q-Type coupling showing front view.

Code	1
L	No shaft

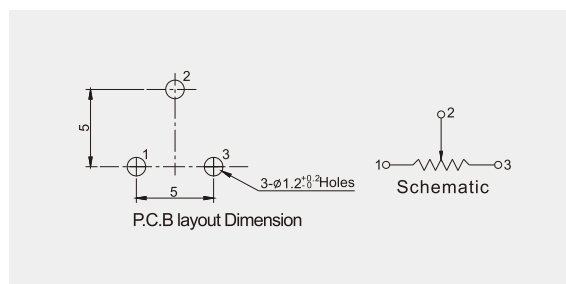
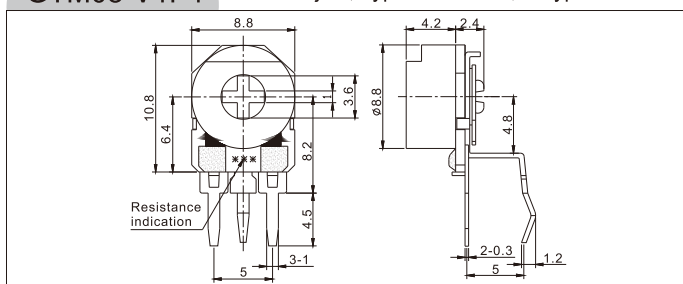
Note 2: Terminal Type

	Top Adjust (H)	Side Adjust (V)
1		
2		
3	N/A	
4	N/A	

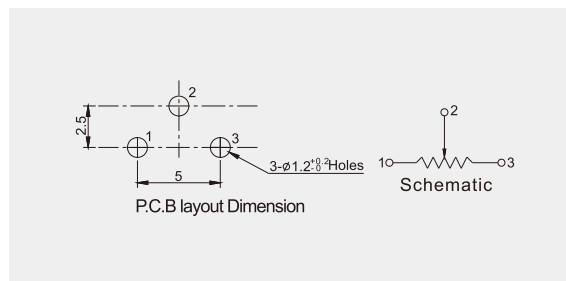
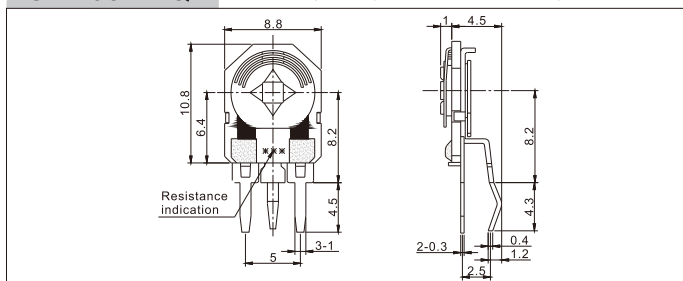
GTM08-V1Q1 Side Adjust, Type 1 Terminal, Q Type Rotor



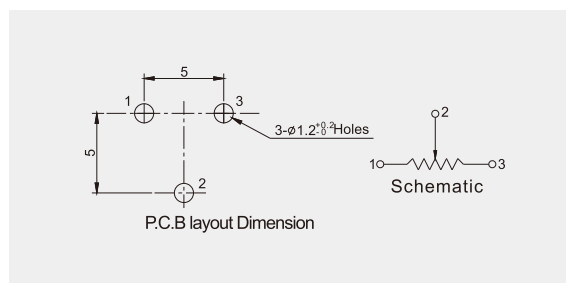
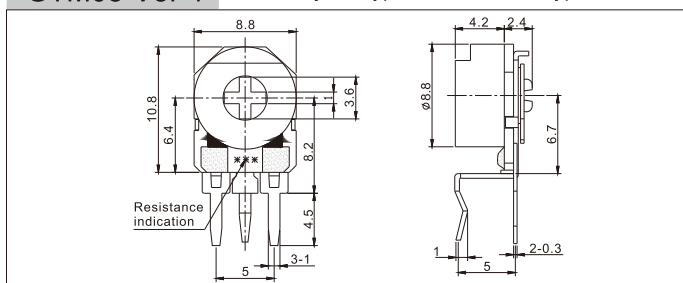
GTM08-V1P1 Side Adjust, Type 1 Terminal, P Type Rotor



GTM08-V2Q1 Side Adjust, Type 2 Terminal, Q Type Rotor



GTM08-V3P1 Side Adjust, Type 3 Terminal, P Type Rotor



GTM08-H1P1 Top Adjust, Type 1 Terminal, P Type Rotor

